

# Resources List

for professionals working with Deaf survivors

## Signhealth Domestic Abuse Service (Click on bold text for more information)

**Information about our service for Deaf Community**

**Adult Referral Form and Young Person Referral Form**

**Health Video Library in British Sign Language ranging from Domestic Abuse, health conditions**



## Top 5 tips to work with Deaf people

**1. Ask what their preferred method of communication is.**

Make sure their communication needs are met and they understand and can engage fully in all modes of communication.

**2. Offer to signpost to the right organisations who can communicate** with them in their preferred language.

**3. Make sure assessments are carried out by experts** who have lots of experience working with members of the Deaf community.

**4. Empower them** to make informed decisions that are right for them.

**5. Make sure they are happy with the choice of interpreters.**

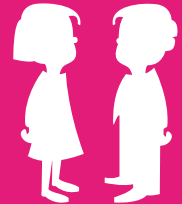
Maybe they know the interpreter from work or through friends. They may not feel comfortable using an interpreter that they know, when discussing domestic abuse.



## Services for Deaf children and young people

List of **DEAF CAMHS in England and Wales** (Deaf Child and Adolescent Mental Health Services)

**NDCS - National Deaf Children's Society**



## Mental Health Support for Deaf Adults

**Referral form to SignHealth BSL Talking Therapies**



## Services that offer Independent Living Support or advice in BSL for Deaf Adults

**SignHealth Specialist Outreach Services**

**Royal Deaf Association (RAD) Services**

**Deaf Plus Advice Line** - in BSL for Deaf people- advice on a range of issues such as benefits, housing, employment, and debt.



## Deaf Awareness Tips

**Learn about Deafness**

**Who uses British Sign Language? Learn to fingerspell in BSL**



## Relay UK App - Free

**Relay UK** - Relay UK helps deaf, speech-impaired, and hearing people talk to each other over the phone using the relay service



## Interpreters & Video Relay Interpreting Service

**NRCPD** - The National Registers of Communication Professionals working with Deaf and Deafblind People

**SignVideo** - Contact them for more information regarding a contract

**SignLive** - Contact them for more information regarding a contract

**SignWow** - Contact them for more information regarding a contract



## Intermediary - Specialist support for people with complex communication needs

**Ministry of Justice Witness Intermediary Scheme** - Information about the Intermediary scheme and who can request one.

**HMCTS intermediary services** - Getting Intermediary support



## Local Sensory Services

Google local sensory service to contact them for more information



## Alerting Devices for Deaf people

### **Smoke Alarm System**

### **Alarm clocks, baby monitors and multi-alerting systems**

### **Doorbells**

The refuges can contact their local council deaf services / sensory services to arrange alerting devices for Deaf and hard of hearing people.

London Fire Brigade offers home visits for Deaf people and installment of deaf fire equipment for free.



## Resources in BSL and helpline in BSL for Deaf people

### **Accessible resources - Videos in BSL for Deaf people**

**Safety and Support Planning** - A guide for safety and support planning in BSL

**Refuge - National BSL Helpline** (10am - 6pm Monday to Friday)



## Ways to contact 999 for Deaf people

**BSL 999** - App can be downloaded on a phone / **Information about BSL 999 for Deaf people**

**999 by text message** - Information for Deaf people



All resources and their links in this list were correct at the time of writing and may have changed overtime.