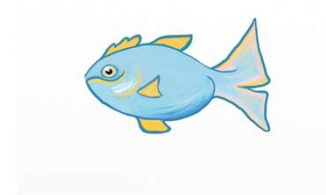
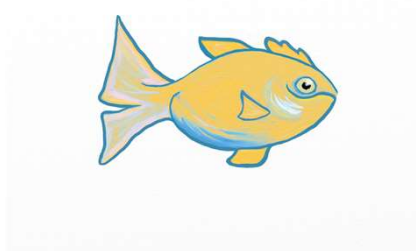
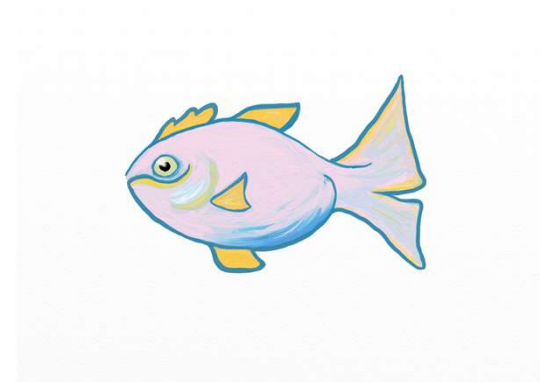
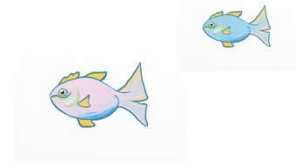
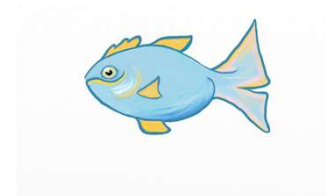
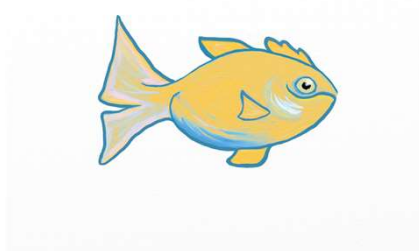
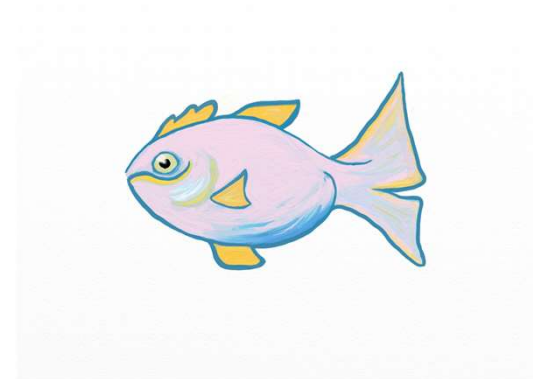
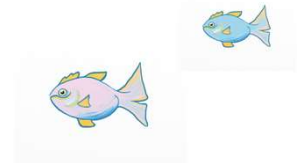


**2021 Gloucestershire Year 6
Transition Survey
Schools' webinar
Wednesday 16th June 2021**



2021 Gloucestershire Year 6 Transition Survey

- Unprecedented year with a lot of the usual transition activities adapted or cancelled because of Lockdown
- Repeat of last year's survey
- Focus on transition to secondary school
- 10-minute online survey, allow 15 mins in total
- School reports to each participating school (August) to help inform next year's Year 6 transition
- Averaged reports to destination secondary phase schools so they are better able to support their new Year 7's and inform their transition activities
- No need to sign up
- COVID impact, if Year 6 is sent home



2021 Gloucestershire Year 6 Transition Survey

Letters with login details have now gone out to schools

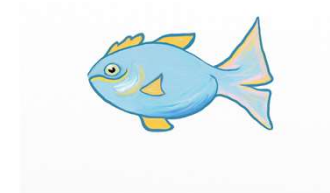
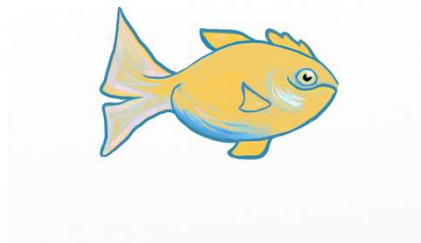
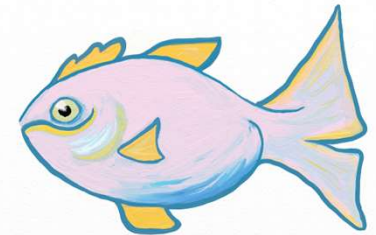
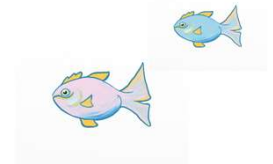
Teacher test login <https://gcc2021move.fabsurveys.co.uk>

User ID = testprimary

Password = 6?eK2dG7S

(If the survey is blocked, please ask your IT manager to “Whitelist”
<https://gcc2021move.fabsurveys.co.uk> and tell them it is the same for every page)

The survey will be open until the end of term




Logging in to the 2021 Year 6 Transition Survey

Letters with login details have gone out to schools. Contact paule@fabresearch.com if you have misplaced or not received yours.


Gloucestershire Year 6 Transition to Secondary Survey 2020

- If you are using a phone, iPad or tablet to fill in the survey, please make sure you **stay within Wi-Fi range or signal at all times** as you cannot return to the survey if you lose signal.
- If the survey freezes, try leaving it for a while and try again (don't refresh the page or you will have to answer the questions on that page again).
- **If you are using an iPad, please use the Chrome browser.**

Please enter your User ID:





Please enter your Password:



Please enter your Year Group:

6



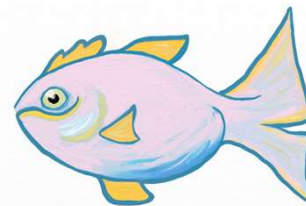
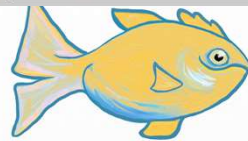


Survey conducted on behalf of Gloucestershire County Council
by Foster And Brown Research Ltd. All rights reserved.

<https://gcc2021move.fabsurveys.co.uk/>

The user ID and password is the same for all pupils in your school.

The password has a ? Symbol, numbers and letters are all **lower case**
The letters are **case sensitive**



2021 Gloucestershire Year 6 Transition Survey

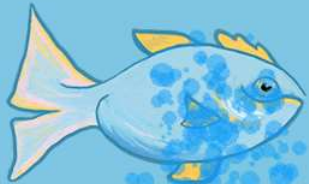
Before we start...

Moving on to your new school

Moving from primary to secondary school is important, exciting and sometimes a scary big change and all Year 6 children will have lots of feelings about this change. This survey has been set up to find out about how you feel about going to secondary school.

In this survey we won't ask your name or anything else that can easily identify you. The results from the survey will be used by your new form tutor to help you gain skills to find the best way to manage these feelings.

You can find lots of helpful information on the website links at the end of this survey.



Page 1 out of 8

Thinking about your new school....

Thinking about moving into your new school next year, how do you feel about the following things:

Making new friends

Very worried A bit worried Not very worried Not worried at all Looking forward to it

New lessons

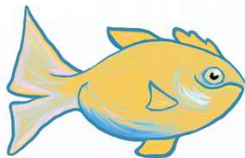
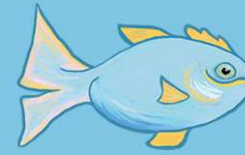
Very worried A bit worried Not very worried Not worried at all Looking forward to it

School work

Very worried A bit worried Not very worried Not worried at all Looking forward to it

Homework

Very worried A bit worried Not very worried Not worried at all Looking forward to it



2021 Gloucestershire Year 6 Transition Survey Content

About you

Please answer these questions about yourself first before we begin

Are you a boy or a girl?

- ☐ girl
☐ boy

Which school are you planning to go to?



Page 3 out of 8

Survey conducted on behalf of Gloucestershire
by Foster And Brown Research



Gloucestershire
Healthy
Living and Learning

Thinking about your new school....

Thinking about moving into your new school next year, how do you feel about the following things:

Making new friends



New lessons



School work



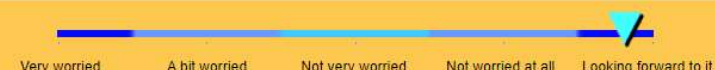
Homework



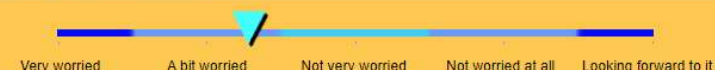
Thinking about your new school....

Thinking about moving into your new school next year, how do you feel about the following things:

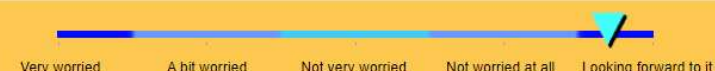
Having a new uniform



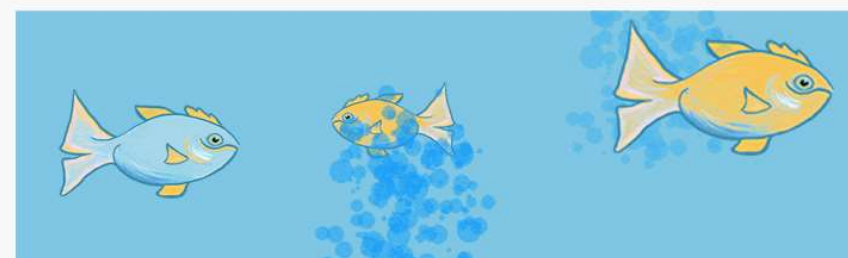
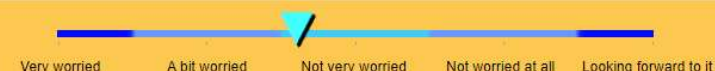
Not seeing my old friends every day



Travelling to your new school



Being in a large school

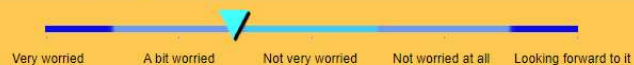


2021 Gloucestershire Year 6 Transition Survey Content

Thinking about your new school....

Thinking about moving into your new school next year, how do you feel about the following things:

Finding my way to different lessons



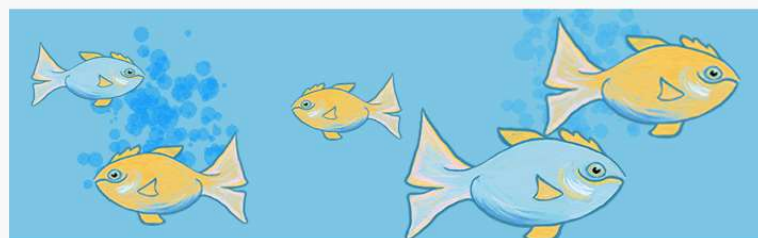
New opportunities to learn and try new things



School lunches



Break times



How do you feel?

Please tell us about what you are really looking forward to about going to secondary school?

chars left: 200

Please tell us what, if anything, you are particularly worried about or not looking forward to?

chars left: 200

Please tell us how we can help you as you move on to secondary school

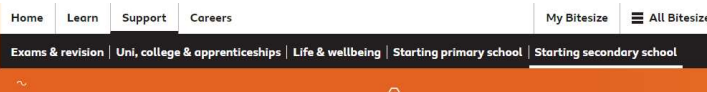
chars left: 200



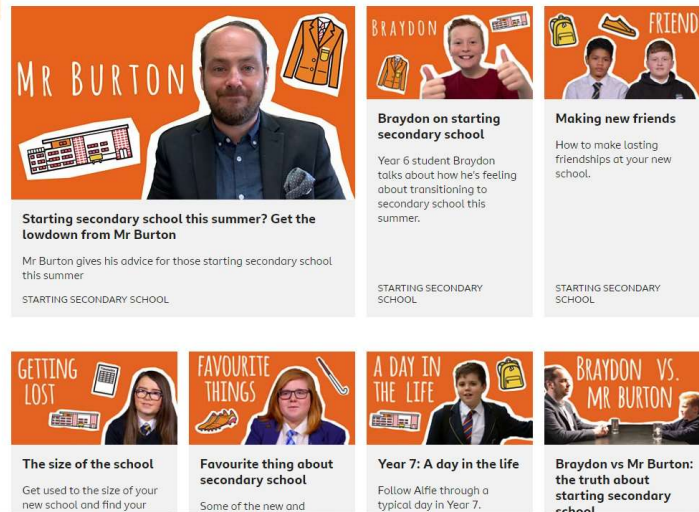
2021 Gloucestershire Year 6 Transition Survey End

Once the children are logged in, the survey will take 5 – 10 mins to complete.

There are links to the BBC Bitesize website about **Starting Secondary School** and mental well-being links for children to look at, and keep the faster ones occupied.



Starting secondary school



Thank you!

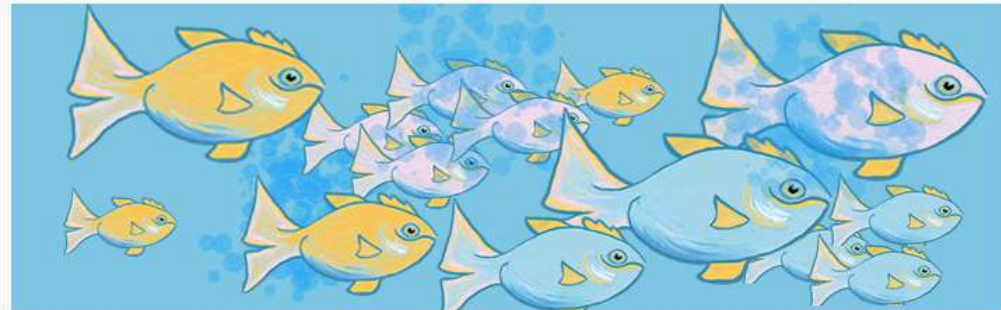
Thank you very much for completing our Survey!

You can read more here about **starting secondary school**

If you are really worried about something, you can find more information for you and your parents at these websites:

- YoungMinds - children and young people's mental health charity
- Tic+ counselling services in Gloucestershire
- On your mind

Please close your browser window when you are finished.

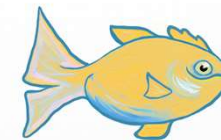
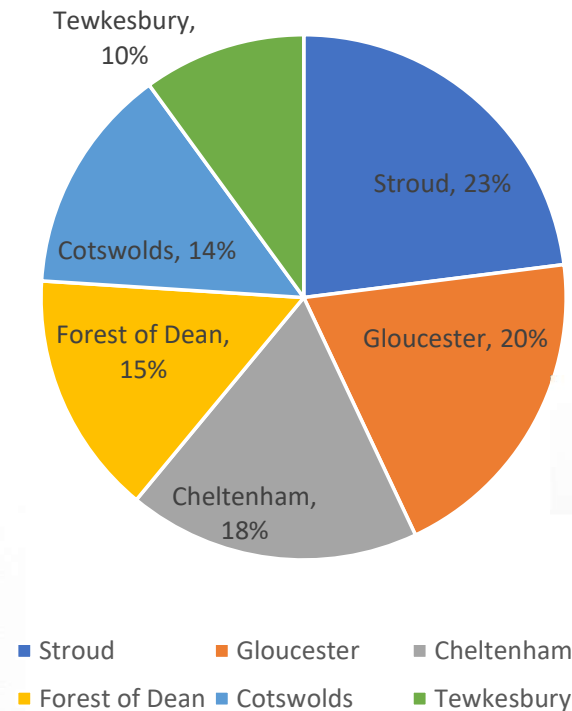


Survey conducted on behalf of Gloucestershire County Council
by Foster And Brown Research Ltd.

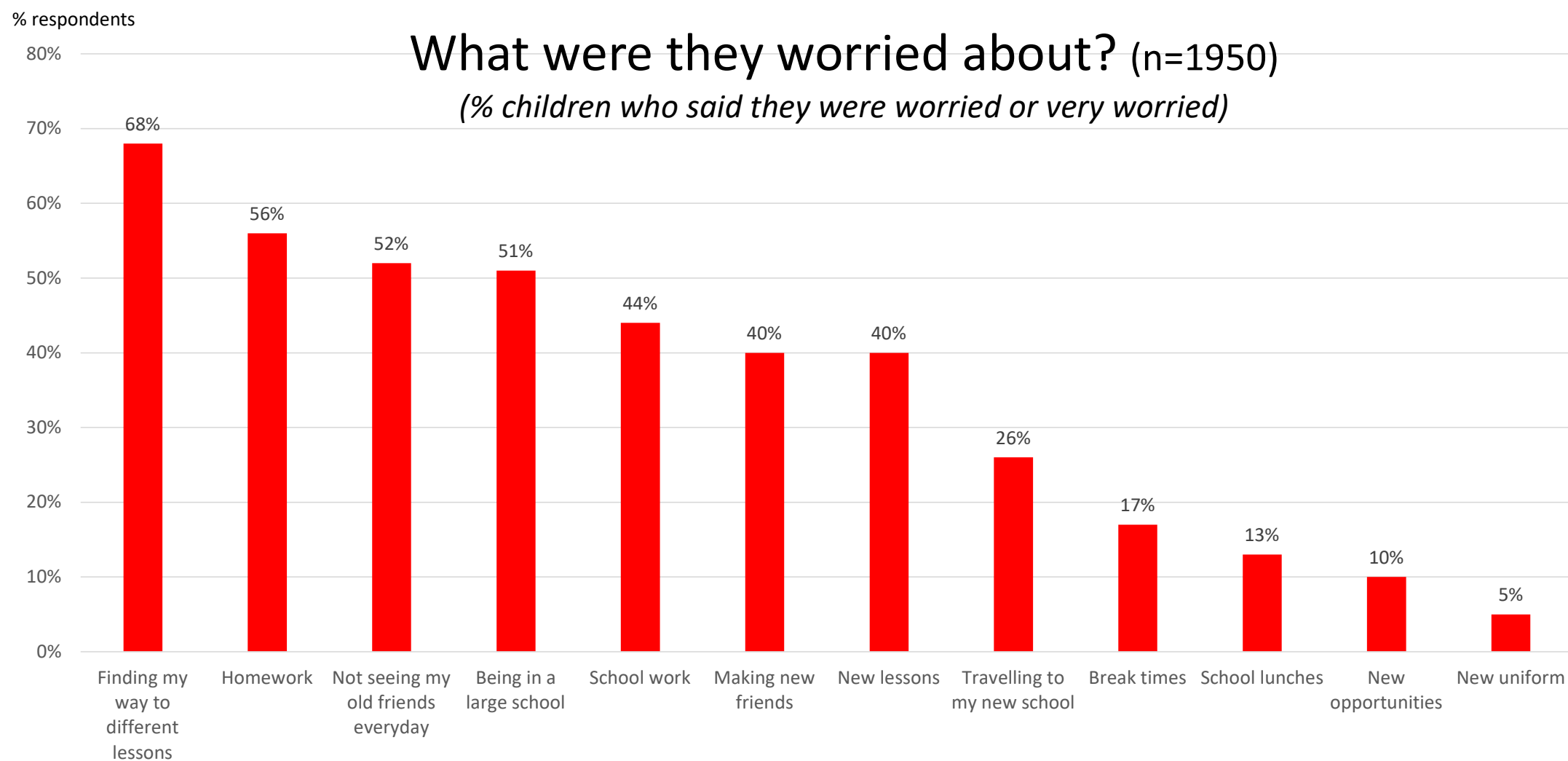
2020 Year 6 Transition Survey Results

- Most of the usual transition activities largely cancelled because of Lockdown
- The survey ran for 7 weeks from 21st May 2020
- 1,950 Year 6 pupils from Gloucestershire schools took part, in school & at home
- Pupils from **117** primary schools, feeding into **54** secondary phase schools
- 52% girls, 48% boys
- 32 pupils from out of County (from 10 feeder primary schools)
- School level reports sent to all Schools

District breakdown



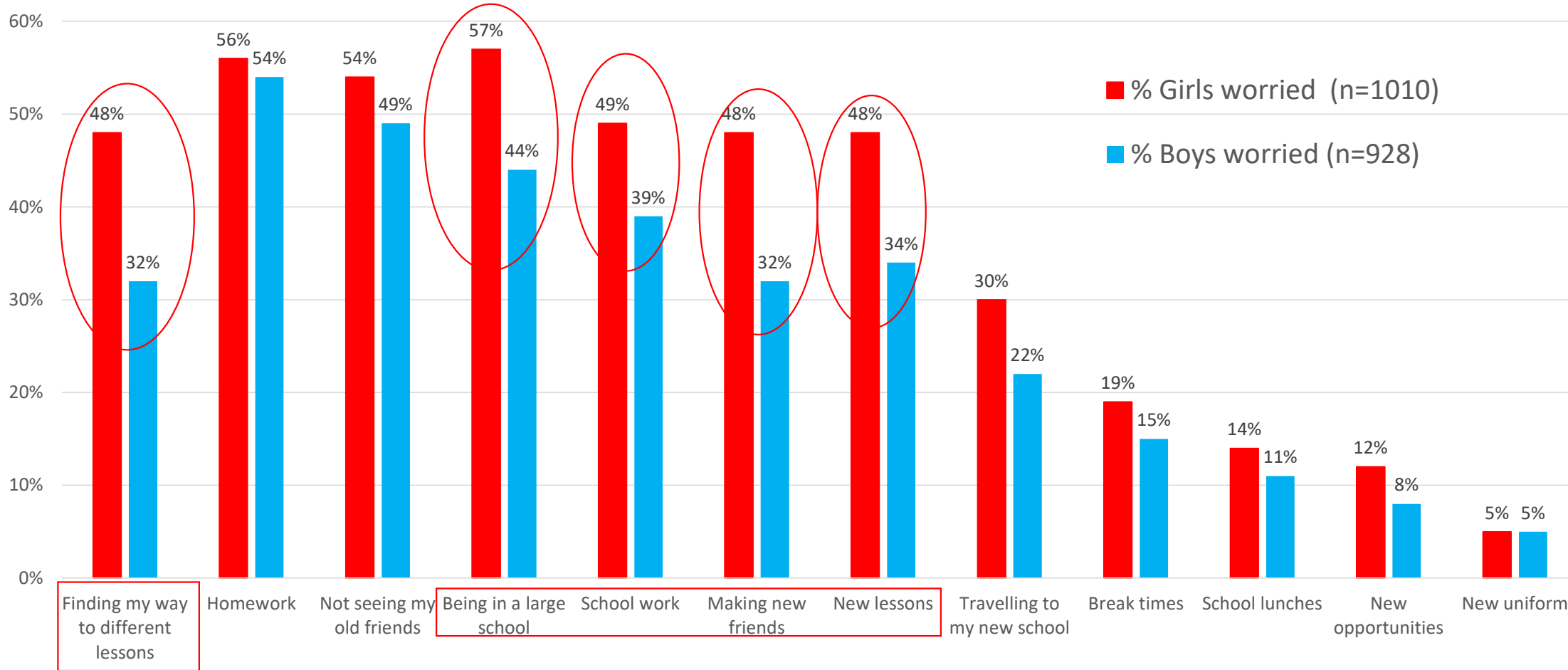
Transition survey main findings: Overall concerns



Transition survey: Overall concerns

What are they worried about - by gender

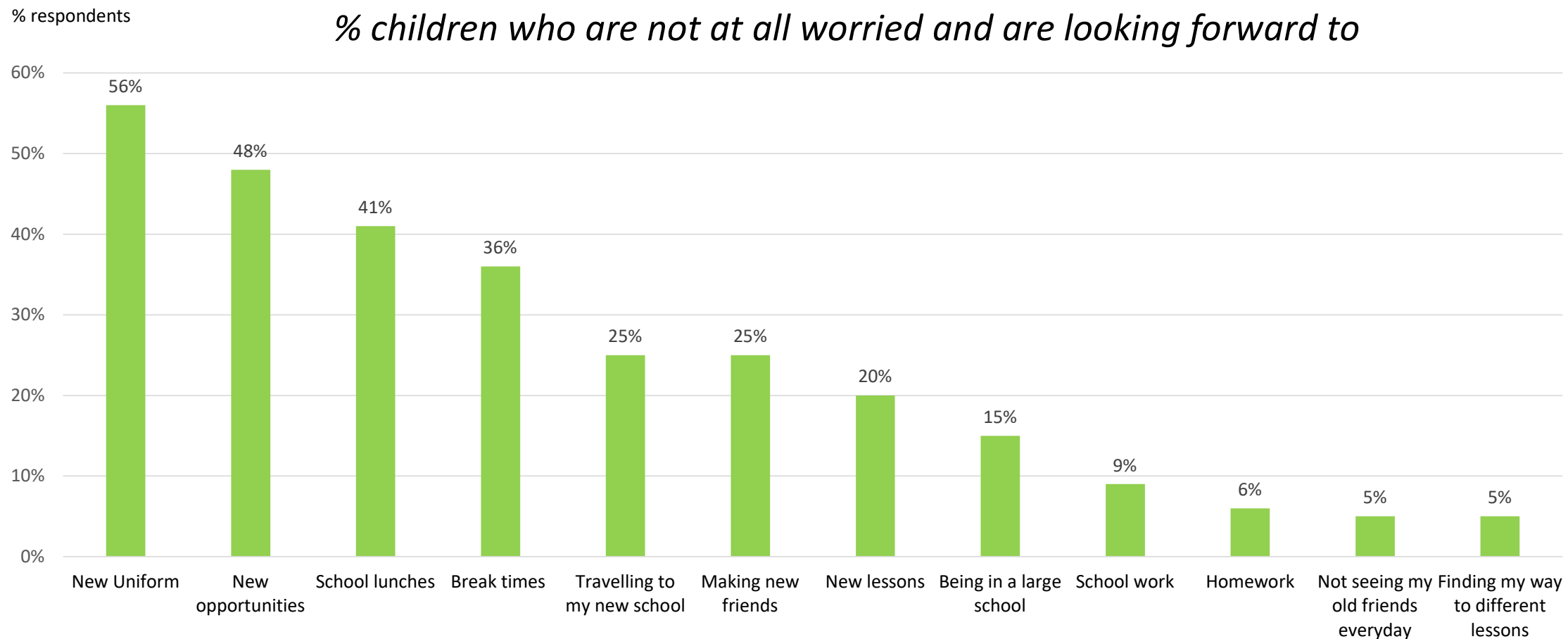
% respondents



Transition survey: Not worried - Looking forward to overall

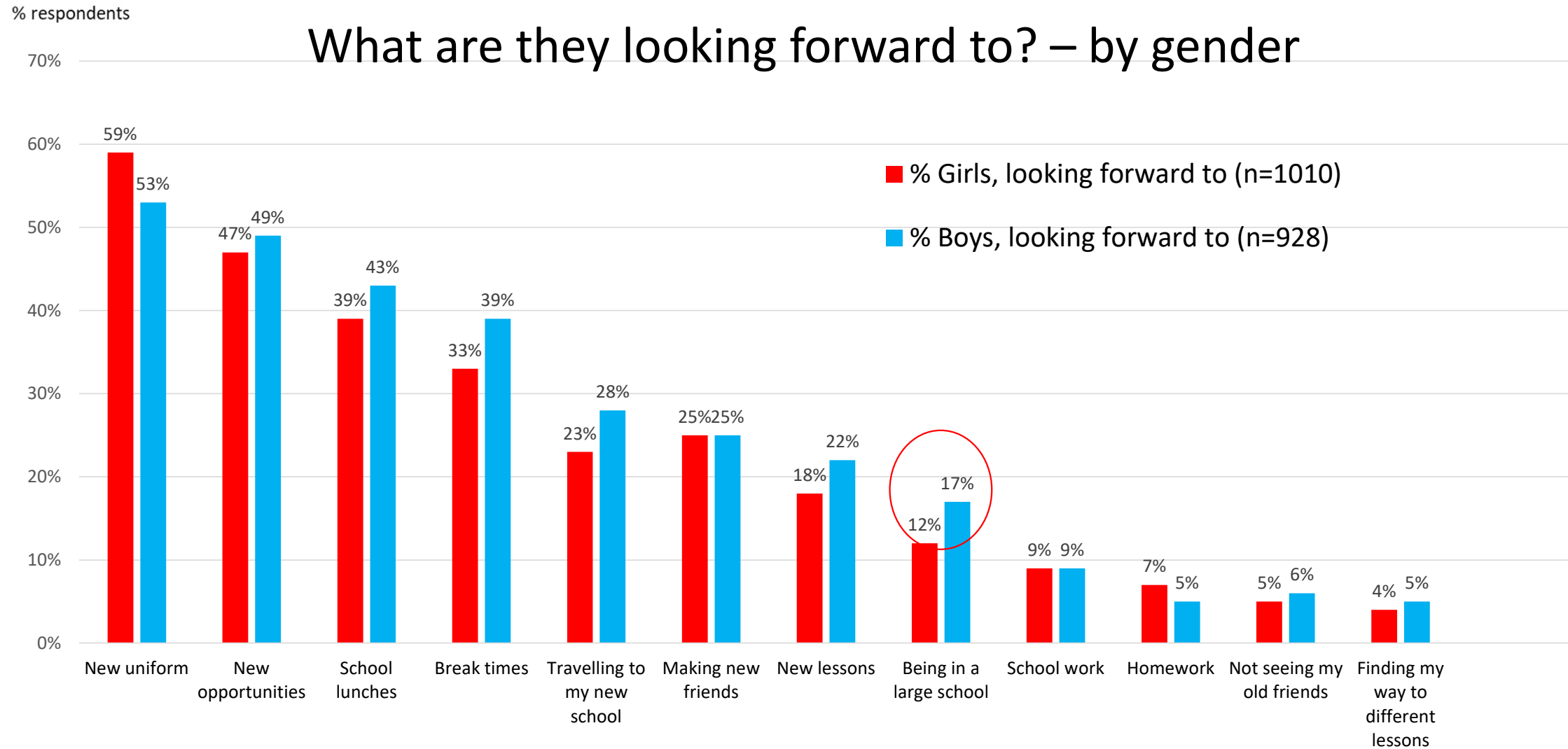
What are they looking forward to? (n=1950)

% children who are not at all worried and are looking forward to



Transition survey: Looking forward to

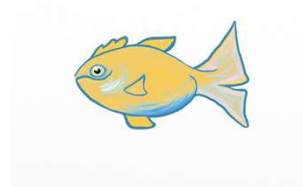
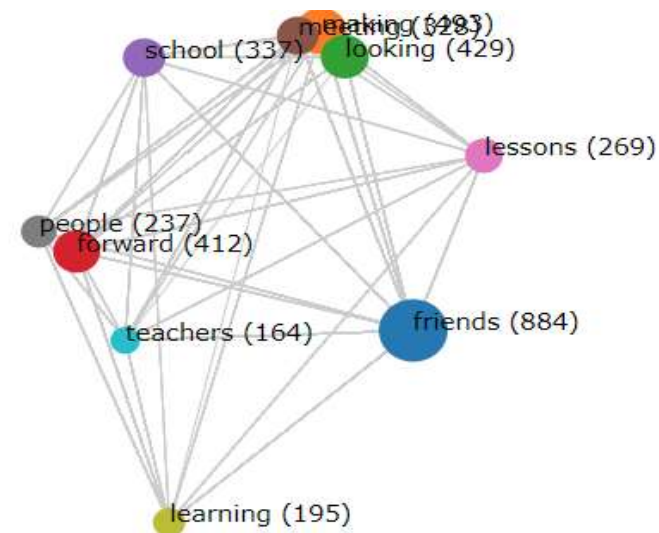
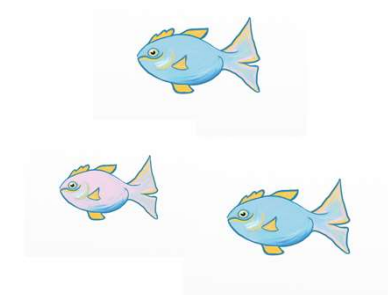
What are they looking forward to? – by gender



2020 Year 6 Transition Survey – Free text

The year pupils were asked to write (free text) about the following:

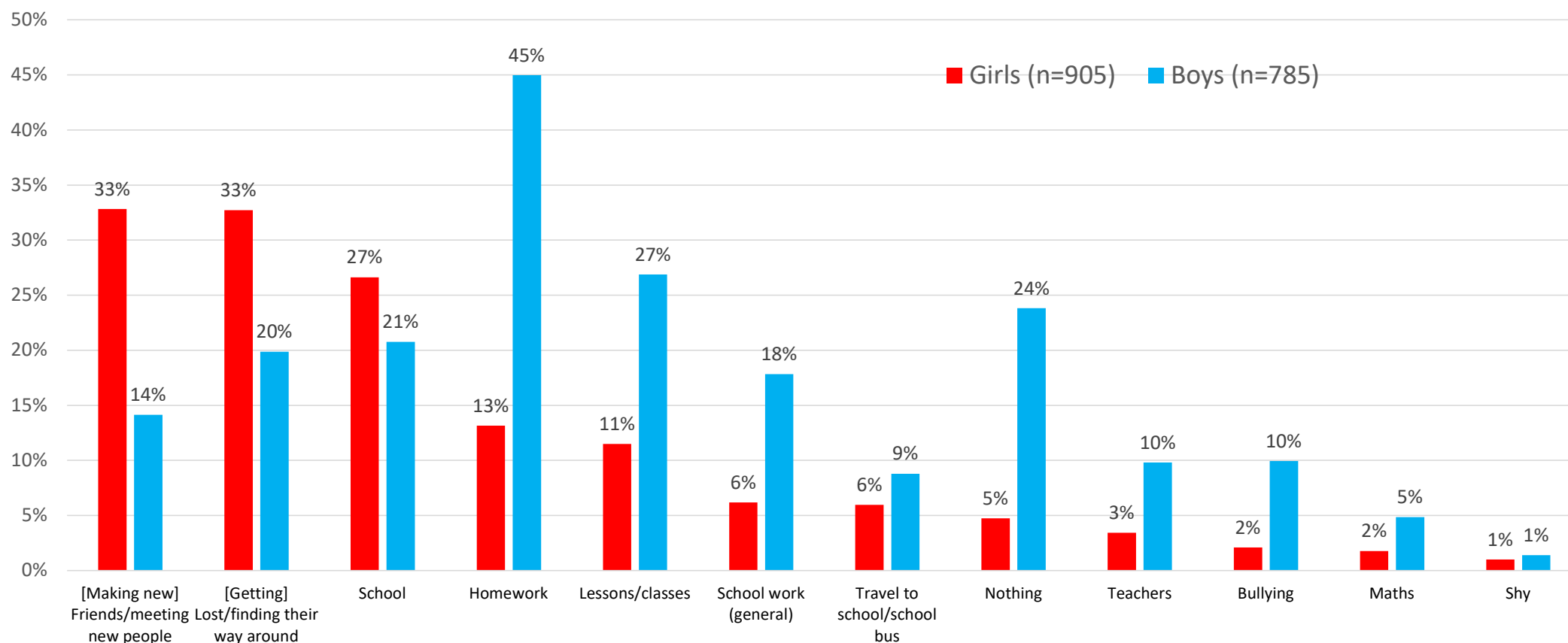
- What you are really looking forward to about going to secondary school?
- What, if anything, you are particularly worried about or not looking forward to?
- How we can help you as you move on to secondary school?
- 94% responded!
- Analysis through subject categorisation and word frequency.



2020 Year 6 Transition Survey – Free text

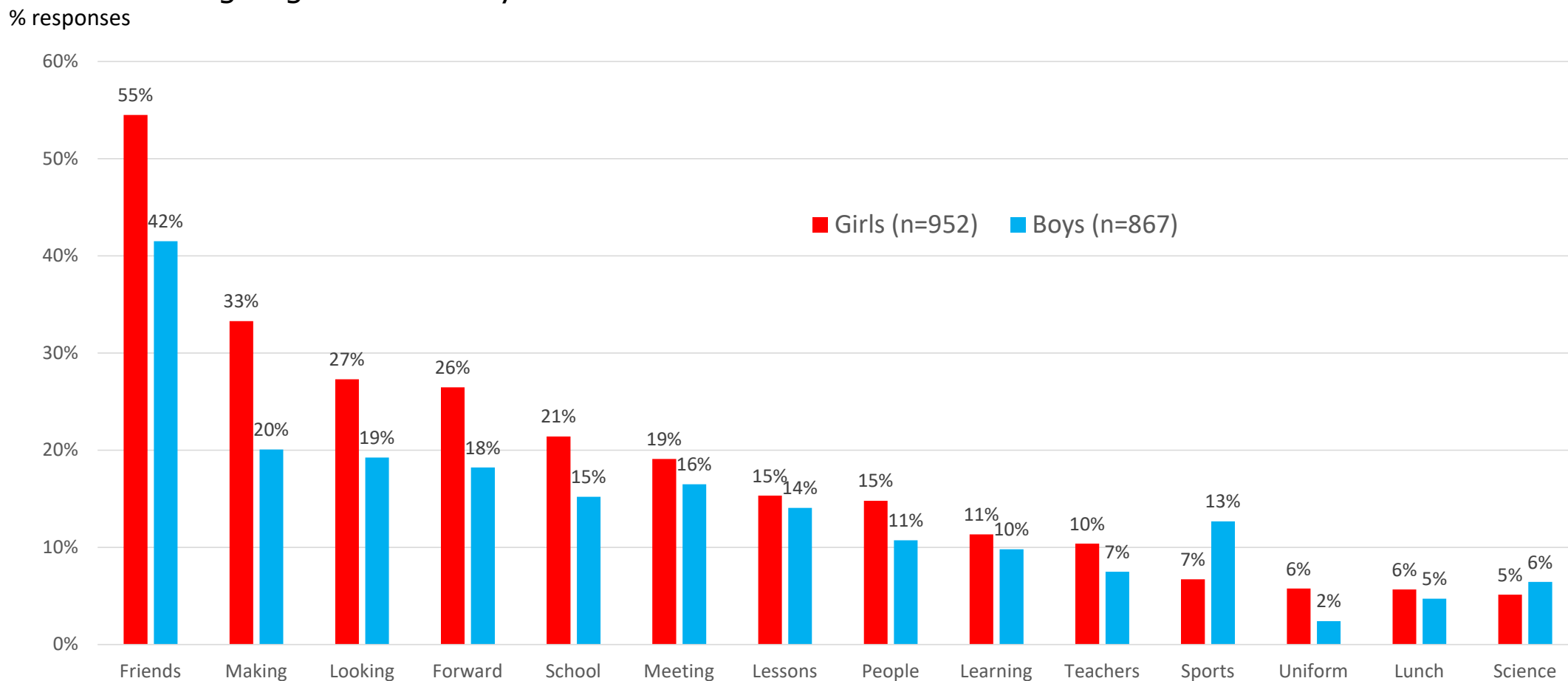
What were the transition Year 6 pupils particularly worried about going to secondary school?

% responses



2020 Year 6 Transition Survey – Free text

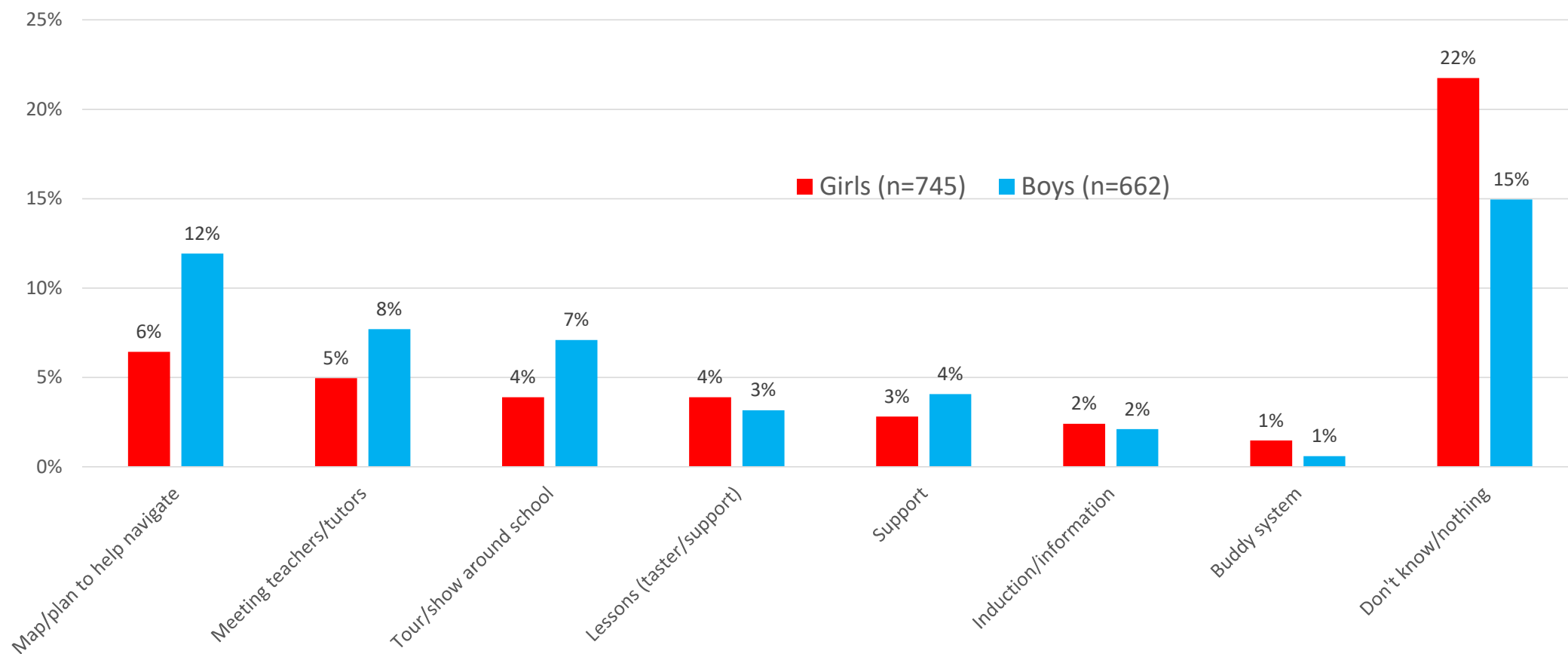
What were the transition Year 6 pupils really looking forward to about going to secondary school?



2020 Year 6 Transition Survey – Free text

What do the Year 6 pupils think could help them make a smoother transition?

% responses



Categorical data – by Secondary school

The mean (average score) of the data for each category was analysed by destination school.

This analysis included 31 pupils from out of County primary schools.

Thinking about moving into you new school next year, how do you feel about the following things?:

- Making New Friends
- New Lessons
- Schoolwork
- Homework
- Having a new uniform
- Not seeing my old friends every day
- Travelling to a new school
- Being in a large school
- Finding my way to different lessons
- New opportunities to learn and try new things
- School lunches
- Break times

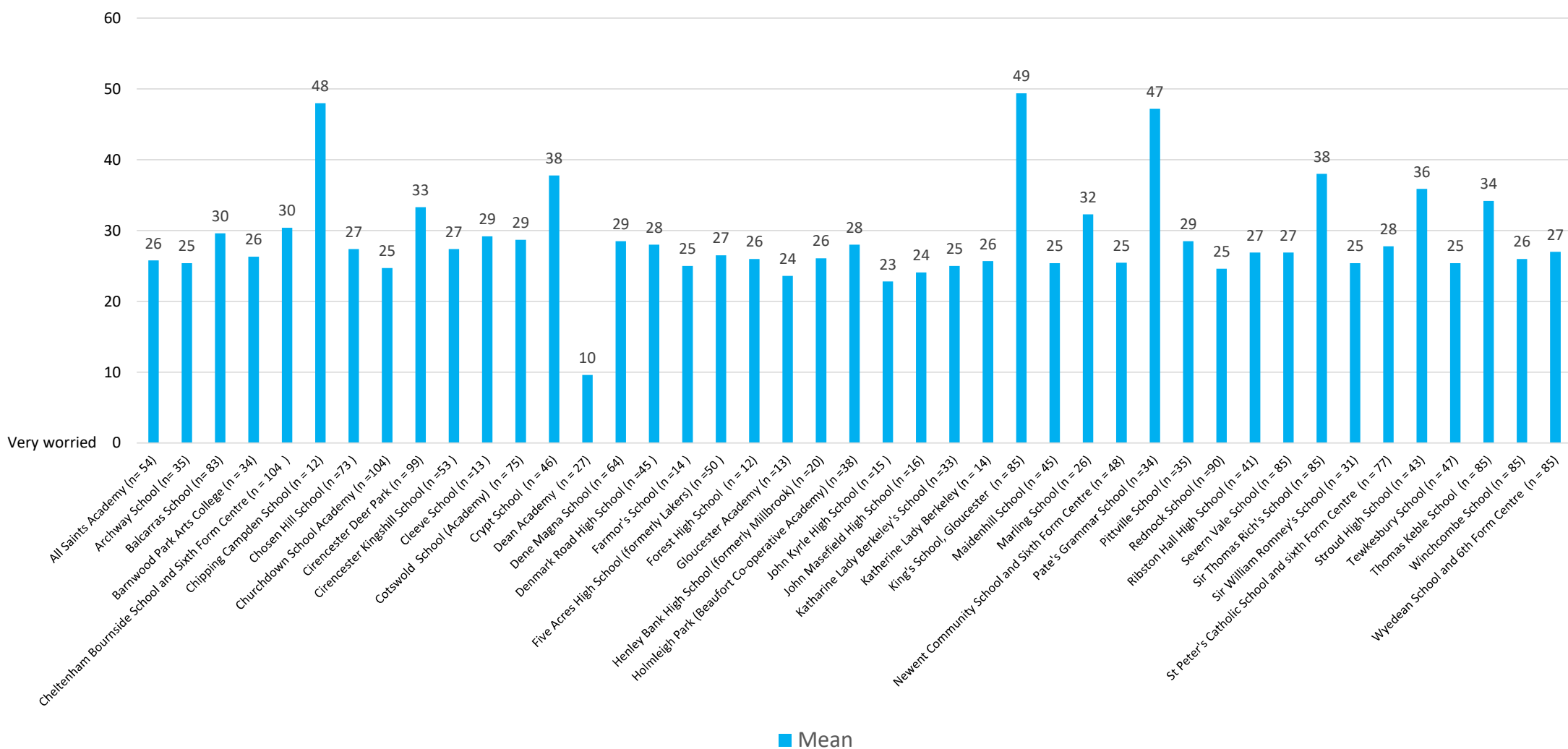
(Randomised order for each respondent, all on one page).



Finding their way to different lessons data by Destination School

Looking forward to it

Finding my way to different lessons (by destination school)



School Reports, sent 24th August 2020

Year 6 transition survey 2020 A Primary School report

Thank you very much for organising your pupils to take part in the Year 6 transition survey in May to July 2020. Nearly 2,000 Year 6 pupils from 114 primary schools across the County took part. Moving from primary to secondary school is important, exciting, and sometimes a frighteningly big change. Year 6 children will have lots of feelings about this change, particularly this year when the usual transition process has been so disrupted. As part of the transition support that has been introduced in Gloucestershire, the Education and Inclusion team commissioned Foster and Brown Research to develop a short pupil focused questionnaire specifically for Year 6 pupils during the Lockdown period. We looked at the transition to secondary school and provided an opportunity for Year 6 pupils to say how they are feeling about this time in their lives. The aim of this research is for secondary schools to have a clear sense of the well-being needs of their new intake pupils, in order to better support the transition process and provide the primary schools with information about 2020 Year 6 pupils which may help to inform future transition preparation.

Below we have provided the results from the 24 completed responses received from year 6 pupils in your school. In the final analysis, 16 responses were from girls (66.7%) and 8 from boys (33.3%). Please be aware that we have cleaned the data (see below) and the numbers might differ slightly to any numbers provided in completion summaries towards the end of the survey period. We hope the results below give you an idea of how your pupils feel about the transition to their secondary school in the County.

Data cleaning

Pupils that were logged in for less than one minute were removed, as were those who answered two or fewer questions. Records where the scoring was inconsistent and the free text indicated the respondents were not taking the survey seriously were also removed.

Year 6 Transition to A Secondary Phase School Survey 2020 Report

Moving from primary to secondary school is important, exciting, and sometimes a frighteningly big change and all Year 6 children will have lots of feelings about this change, particularly this year when the usual transition process has been so disrupted. As part of the transition support that has been introduced in Gloucestershire, the Education and Inclusion teams commissioned Foster and Brown Research to develop a short pupil focused questionnaire specifically for Year 6 pupils during the lockdown period. We focused on the transition to secondary school and this survey provided an opportunity for Year 6 pupils to say how they are feeling about this time in their lives. The aim of this research was for secondary phase schools to have a clearer sense of the well-being needs of their new intake pupils, in order to better support the transition process and provide the primary schools with information about 2020 Year 6 pupils which may help to inform future transition preparation.

Nearly 2,000 Year 6 pupils from 114 primary schools from across the County took part in a transition survey in May to July 2020. These are listed in Annex 1 of this report. A further 9 out of County schools with pupils who are planning to attend Gloucestershire schools were also included in your data analysis.

In this report we have provided the results from the 35 completed responses received from year 6 pupils who are planning on transitioning to Archway School in September. In the final analysis, 19 responses were from girls (54%) and 16 from boys (46%).

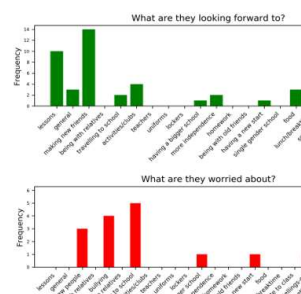
Data cleaning

Pupils that were logged in for less than one minute were removed, as were those who answered two or fewer questions and no free text questions. Records where the scoring was inconsistent and the free text indicated the respondents were not taking the survey seriously were also removed.

Results

The children were asked; What are they looking forward to? What are they worried about? and How can we help? These were all free text questions summarised in the histograms below. The full text replies are available in the ANN1 of this report.

Figure 1: Summary of free text replies for a Primary School



Results

The children were asked; What are they looking forward to? What are they worried about? and How can we help? These were all free text answers summarised in the histograms below. The full text replies are available in the ANN1 of this report.

Figure 1: Summary of free text replies for A Secondary Phase School

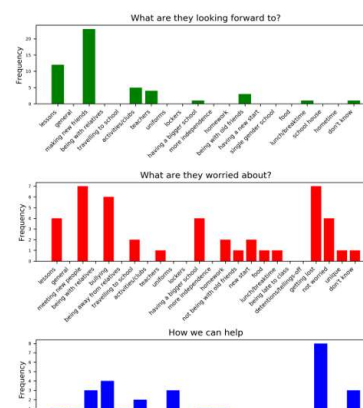
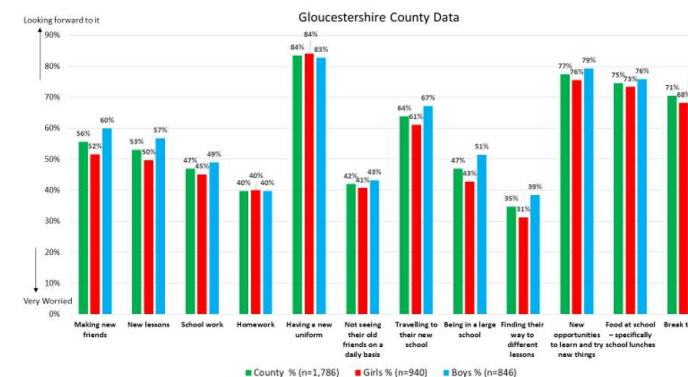
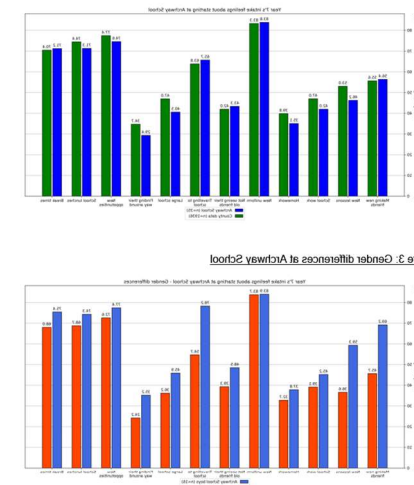


Figure 2: What aspects of Year 7 and their new school are Children looking forward to and what are they worried about?



A full breakdown of the results is given in the accompanying pdf report for the County. If you would like any further information, please contact paule@fabresearch.com.

Figure 3: Gender differences at Archway School



Thank you to all the schools who took part last year

Amberley Parochial School	Chesterton Primary School	Greatfield Park Primary School	Nailsworth CofE Primary School	Slimbridge Primary School	The John Moore Primary School
Andoversford Primary School	Christ Church (Chalford) CofE Primary Schc	Hardwicke Parochial Primary A	North Nibley Primary School	Southrop CofE Primary School	The Rissington School
Ann Cam C.E. Primary School	Christ Church (Cheltenham) CofE Primary S	Haresfield C.E. Primary School	Norton CofE Primary School	St Andrew's CofE Primary School, Tibberton Community Primary School	
Avening Primary School	Churcham Primary School	Hatherop CofE Primary School	Oak Hill C.E. Primary School	St Dominics Catholic Primary Schc	Tuffley Primary School
Aylburton C E Primary School	Churchdown Village Junior School	Hester's Way Primary School	Oakridge Parochial School	St James and Ebrington C of E Pri	Uley CofE Primary School
Barnwood C of E Primary School	Clearwell C. of E. School	Hillview Primary School	Oakwood Primary	St James' Primary School (Cheltenham Uplands Community Primary School	
Beech Green Primary School	Coaley C of E Primary School (Voluntary aic	Hope Brook CofE Primary Schoc	Park Junior School	St John's C of E Academy (Coleford)	Upton St. Leonards CofE Primary School
Berkeley Primary School	Coney Hill Community Primary	Hopelands Preparatory School	Parkend Primary School	St Mary's Catholic Prim School (Cl	Warden Hill Primary School
Berkhamstead School Prep	Coopers Edge School	Huntley CofE Primary School	Picklenash Junior School (Newe	St Paul's C of E Primary School	Watermoor C E Primary School
Berry Hill Primary School	Cranham C. of E.Primary School	Isbourne Valley School	Pillowell Community Primary Sc	St Peter's Catholic Primary School	Whiteshill Primary School
Bisley Bluecoat Cof E Primary School	Deerhurst & Apperley CE Primary School	Kingsway Primary	Powell's CofE Primary school	St Thomas More Catholic Primary	Whitminster Endowed CofE Primary School
Blakeney Primary School	Drybrook Primary School	Lakefield CofE Primary School	Primrose Hill CofE Primary Aca	St White's Community Primary Sc	Willersey CofE Primary School
Bledington Primary School	Eastcombe Primary School	Lakeside Primary School	Randwick CofE Primary School	Staunton & Corse CofE Primary Sc	Winchcombe Abbey CofE Primary School
Bourton-on-the-Water Primary Academy S	Ellwood Community Primary School	Linden Primary School	Redmarley CofE Primary School	Steam Mills Primary School	Woodchester Endowed CofE Aided Primary
Callowell Primary School	Elmbridge Primary School	Longlevens Junior School	Rodmarton Primary School	Stow-on-the-Wold Primary Schoc	Woodside Primary School
Cam Hopton CofE Primary School	Field Court Junior School	Longney CofE Primary School	Rowanfield Junior School	Stratton C.E. Primary School	Woolaston Primary School
Cam Woodfield Junior School	Finlay Community School	Meysey Hampton Primary Scho	Sapperton CofE Primary School	Temple Guiting CofE School	Yorkley Primary School
Cashes Green Primary School	Forest View Primary School	Miserden C of E (Aided) Primary	Severnbanks Primary School	The British School	
Charlton Kings Junior School	Glenfall Community Primary School	Mitcheldean Endowed Primary	Sherborne CofE Primary School	The Catholic School of St Gregory the Great	
CTAP, St Georges Centre	Gloucester Road Primary School	Mitton Manor Primary School	Shurdington CE Pri School	The Croft Primary School	



And thank you to all the schools who are taking part this year!

First week's progress: 530 pupils

Thank you for listening, any questions? paule@fabresearch.com

